

FRONT SEAT DISASSEMBLY/ASSEMBLY

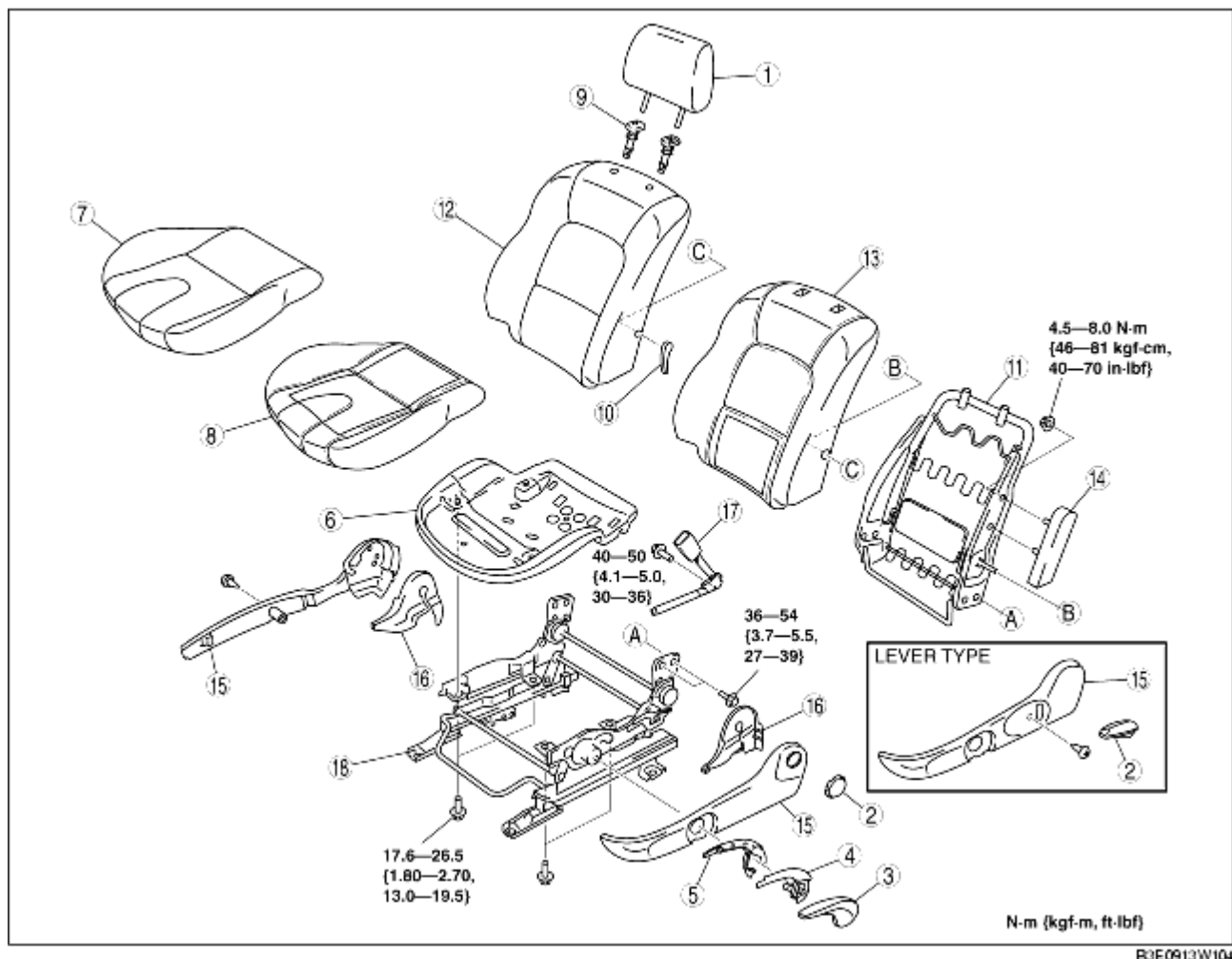
B3E091357100W02

Warning

- Handling the front seat (with a side air bag and a pre-tensioner seat belt) improperly can accidentally deploy the side air bag and pre-tensioner seat belt, which may seriously injure you. Read the service warnings before handling the front seat (with a side air bag and a pre-tensioner seat belt). (See [SERVICE WARNINGS](#).)

1. Disassemble in the order indicated in the table.
2. Assemble in the reverse order of disassembly.

Driver's Seat

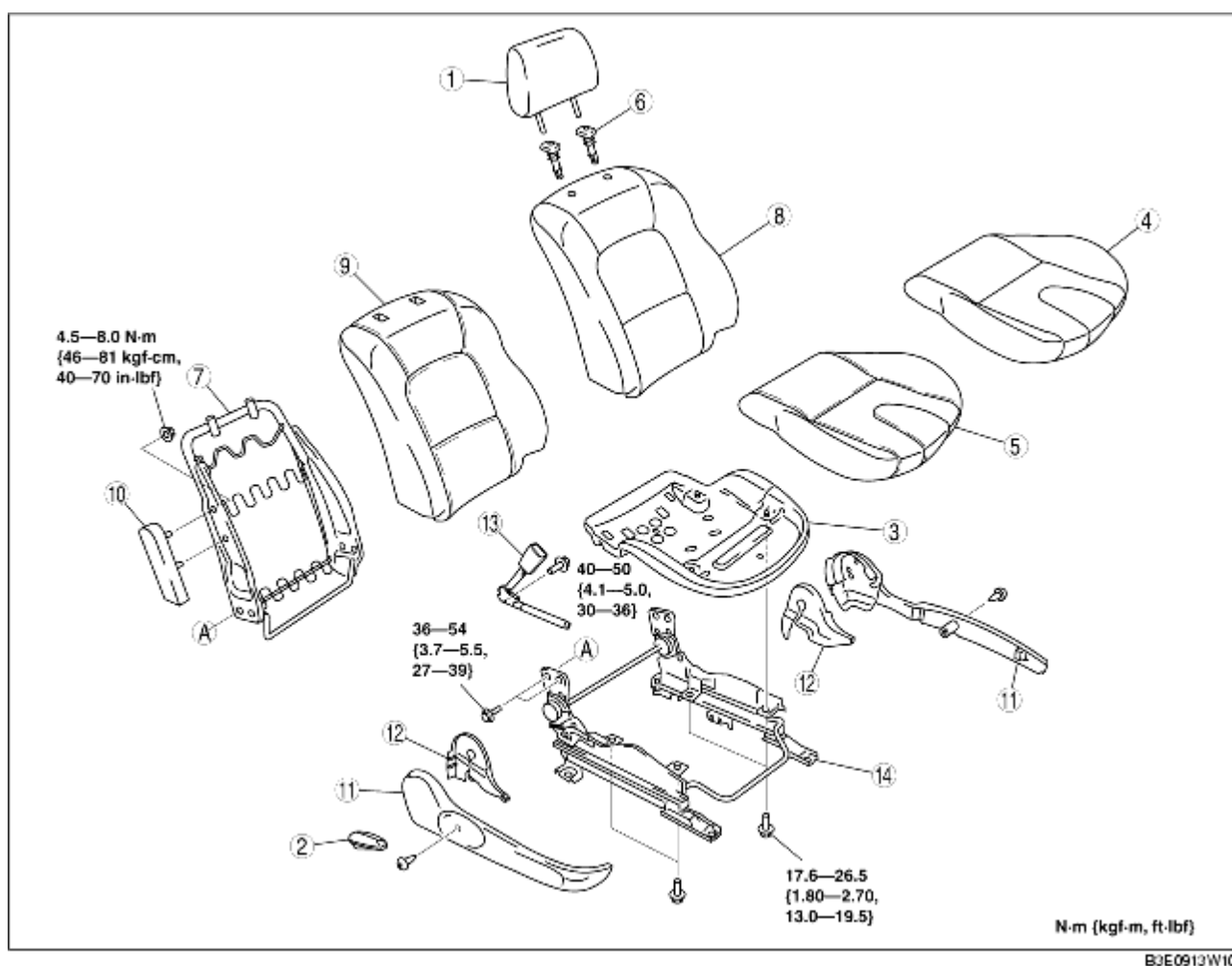


B3E0913W104

1	Headrest
2	Recliner lever (lever type)/Recliner dial (dial type)
3	Outer lift lever cover
4	Lift lever
5	Inner lift lever cover

6	Seat cushion frame
7	Seat cushion trim
8	Seat cushion pad
9	Pole guide
10	Lumbar support lever
11	Seat back frame
12	Seat back trim
13	Seat back pad
14	Side air bag module (See SIDE AIR BAG MODULE REMOVAL/INSTALLATION.)
15	Side cover
16	Reverse cover
17	Front buckle
18	Slide adjuster

Passenger's Seat



1	Headrest
2	Recliner lever
3	Seat cushion frame
4	Seat cushion trim
5	Seat cushion pad

6	Pole guide
7	Seat back frame
8	Seat back trim
9	Seat back pad
10	Side air bag module
11	Side cover
12	Reverse cover
13	Front buckle
14	Slide adjuster